



LOADING
PLEASE WAIT...

Miami =



Ground ZERO 4 SLR



I DON'T BELIEVE IN
GLOBAL WARMING

Caroline Lewis, The CLEO Institute - www.CLEOInstitute.org

Positive proof of global warming.



1800's

1900's

1950

1970

1980

1990

Global problem, local Solutions



COP21 • CMP11
PARIS 2015
UN CLIMATE CHANGE CONFERENCE

CLIMATE CHANGE: What lies ahead?

Panel discussion- A first-hand report
of the Climate Change Summit (COP21)

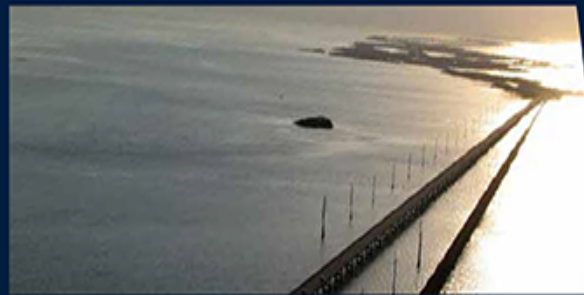
DECEMBER 11, 2015 AT 6:30 pm

Venue: Center for Social Change 2013 Coral Way, 2nd Floor,
Miami, FL 33145



UM participated to the South East Florida Regional Climate Leadership Summit 2014.

The Honorable Harvey Ruvin, Clerk of the Courts, Miami-Dade County with



A Region Responds to a Changing Climate

Southeast Florida Regional Climate Change Compact Counties

Regional Climate Action Plan

October 2012

SOUTHEAST FLORIDA
REGIONAL COMPACT

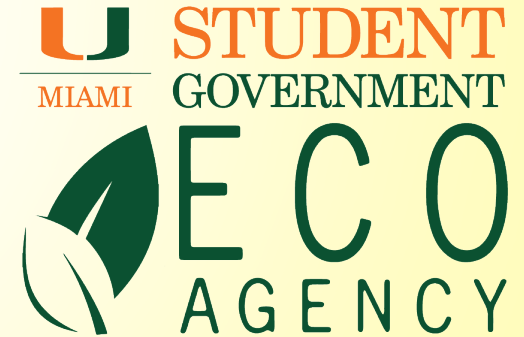
CLIMATE
CHANGE





UM is taking action!

2007





SUSTAINABLE DEVELOPMENT GOALS

17 GOALS TO TRANSFORM OUR WORLD

1 NO POVERTY

2 ZERO HUNGER

3 GOOD HEALTH AND WELL-BEING

4 QUALITY EDUCATION

5 GENDER EQUALITY

6 CLEAN WATER AND SANITATION

7 AFFORDABLE AND CLEAN ENERGY

8 DECENT WORK AND ECONOMIC GROWTH

9 INDUSTRY, INNOVATION AND INFRASTRUCTURE

10 REDUCED INEQUALITIES

11 SUSTAINABLE CITIES AND COMMUNITIES

12 RESPONSIBLE CONSUMPTION AND PRODUCTION

13 CLIMATE ACTION

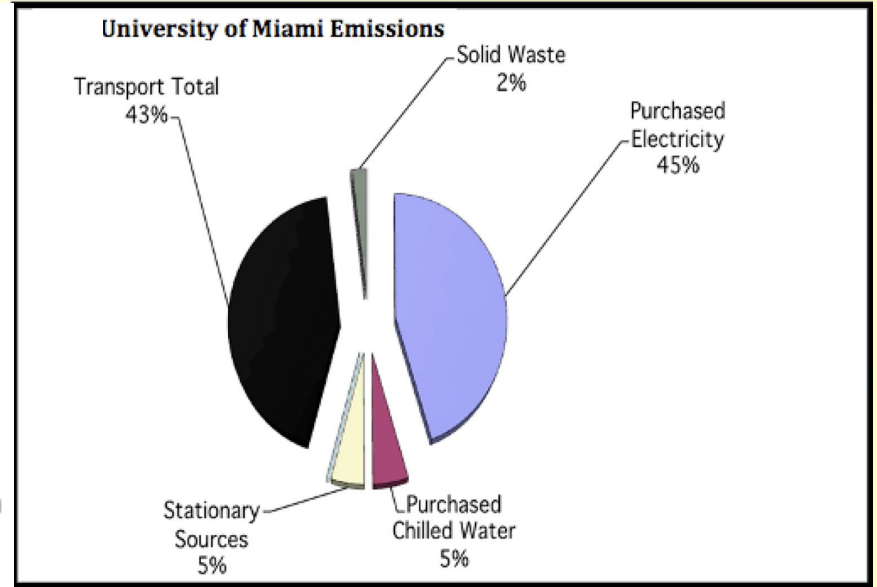
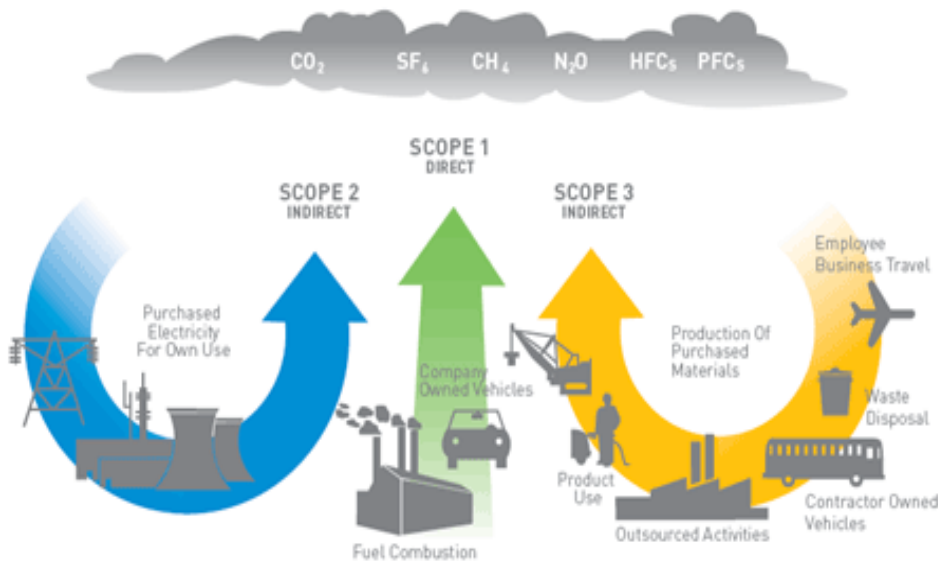
14 LIFE BELOW WATER

15 LIFE ON LAND

16 PEACE, JUSTICE AND STRONG INSTITUTIONS

17 PARTNERSHIPS FOR THE GOALS

SUSTAINABLE DEVELOPMENT GOALS



Our Carbon Footprint Goal:

Reduce greenhouse gas emissions to 20 % of 2005 levels by the year 2025

**WE ARE
STILL IN**



UM got its first SILVER ranking on the STARS program

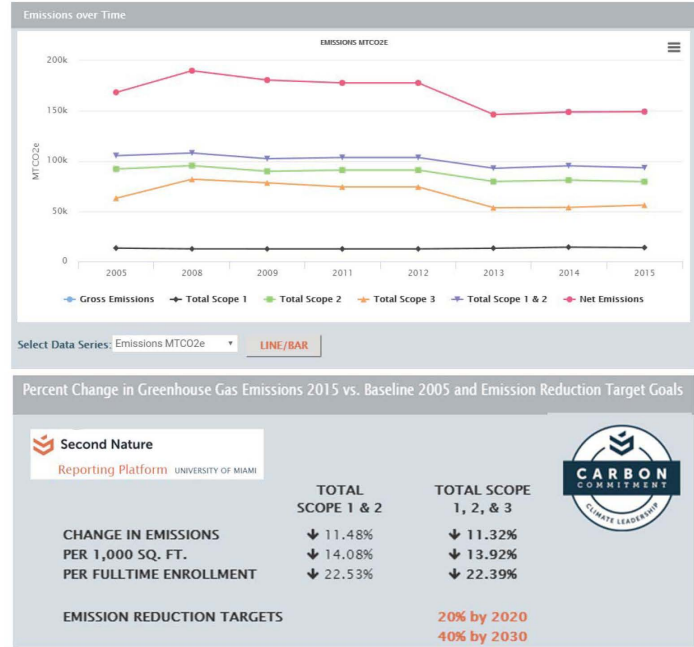


STARS is a transparent, self-reporting framework for colleges and universities to measure their sustainability performance.

Sustainability Action Plan



2017-2019



Dr. Ben Kirtman is a professor at the University of Miami's Rosenstiel School of Marine and Atmospheric Science and is co-chair of the NOAA Climate Prediction Task Force. He is a lead author of the latest report by the Intergovernmental Panel on Climate Change used during the 2015 Paris Summit to achieve an unprecedented unanimous agreement.





Since 2008 all new construction at UM are [LEED Silver certified](#)





Since 2008 all new construction at UM are **LEED Silver certified**

The Patricia Louise Frost Music Studios are LEED Platinum

Rainwater system
flushing toilets

Electro chromatic
windows

Titanium dioxide
coating for outdoor
air pollution

70KW solar
system





RENEWABLE ENERGY

- > The brand new Patricia Louise Frost Music : **50 KW Photovoltaic solar panel system**
- > Food Court : **20 KW Solar PV system sponsored by ECO**
- > **Solar Water Heater** at our Cox Science Building

Energy Efficiency
=
Savings

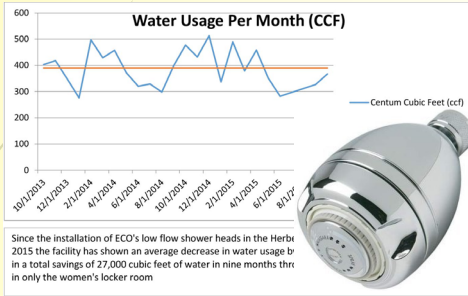




Student Government ECO Agency installs a 20 KW Solar system on the Hurricane Food Court roof.



ECO 's projects



Low flow shower heads Wellness



Solar charging umbrellas

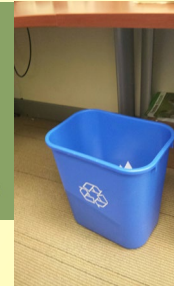
Ecosystem signs on Lake Osceola



Food Court Solar System



Recycling in dorms



Energy Dashboard



UM Guidelines for Single Stream Recycling:



RECYCLE at UM with Green U

4 simple rules of recycling



1- Periodically **EMPTY YOUR SMALL BLUE BIN** in the nearest Recycling bin with a **CLEAR LINER**:
Recycle any **EMPTY** plastic container or glass bottle, any **EMPTY** steel or aluminum can, any **CLEAN** paper or cardboard.



2 - Please, **NO FOOD, WET / SOILED ITEMS** or **PLASTIC BAGS** in the **RECYCLING CONTAINERS**.



3 - **BLACK LINERS** are for **TRASH**. If you need to throw away food or soiled cups and containers at your desk, please, go to the nearest Trash bin (breakroom or kitchen).



4 - Drop your **Confidential paper** **DIRECTLY** in the nearest **SHRED-IT** console.

If you use a shredder, make sure you place a CLEAR bag in it. Shredded paper will be recycled.

More information at [305-284-8520](tel:305-284-8520) or green@umiami.edu



APPLY NOW!
visit miami.edu/green





GreenU



CLEAN PAPER • CARDBOARD

EMPTY BOTTLES • EMPTY CANS

RECYCLE

NO FOOD



NO LIQUIDS



University of Miami - Coral Gables
 Monthly Waste Stream Summary
 In October:



Landfilled	322.12 tons	81%
Diverted	76.97 tons	19%
Total	399.09 tons	100%

Diverted material includes:

Single Stream Material:	Aluminum	2.31 tons
Paper	15.39 tons	Glass 0.77 tons
Plastic	0.77 tons	Cardboard 57.73 tons

University of Miami - RSMAS
 Monthly Waste Stream Summary
 In October:



Landfilled	9.52 tons	66%
Diverted	4.97 tons	34%
Total	14.49 tons	100%

Diverted material includes:

Single Stream Material:	Aluminum	0.27 tons
Paper	1.51 tons	Glass 0.33 tons
Plastic	0.37 tons	Cardboard 2.48 tons

ReUse Store



Food and Food Waste



Nature and Landscaping



Sustainability in the Curriculum

The Cane Link catalog features more than 50 classes from all schools and colleges with the "**Sustainability**" attribute. It allows students to search for courses with a sustainability focus or content, and apply to the Sustainability Certificate administered by the Ecosystem Science and Policy



ABESS CENTER
for ECOSYSTEM
SCIENCE & POLICY

**Sustainability
Certificate**

Turn your interest in sustainable business, environmental practices, architecture, or community building into a line on your transcript! Take the Global Sustainability cognate plus 9 additional credits. More information at: www.cesp.miami.edu

UNIVERSITY OF MIAMI
ABESS CENTER
for ECOSYSTEM
SCIENCE & POLICY

U Health



- Single Stream Recycling
- Biohazard waste reduction
- Butterfly and Herbs gardens
- Reuse Store
- Healthier Food Challenge



 Healthier Hospitals	 PRACTICE Greenhealth
Healthy food is the best medicine	
 <p>The United States spends billions of dollars to treat diet-related, chronic illnesses.</p>	 Less Meat. Better Meat
 <p>Hospitals can leverage their purchasing power to increase the availability of local, sustainable foods.</p>	 Local and Sustainable Foods
 <p>As part of their mission of healing, hospitals can model healthier eating behavior.</p>	

February - March

Join students
all across the State,
and make the

the # 1 Recycling campus

Keep it clean, keep recycling

Corporate Sustainability Symposium

UNIVERSITY OF MIAMI
SCHOOL of BUSINESS
ADMINISTRATION

Green U

FOOD DAY

miami.edu/foodday2015 #FoodDay2015

GREEN ATHLETICS CONFERENCE

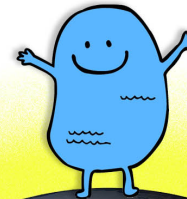
NOVEMBER 7 | 12-1 PM

SCHWARTZ CENTER AUDITORIUM

EARTH DAY - HUG THE LAKE

Friday, April 21st - 10 am to 3 pm - Lakeside Patio

- > Green Fair
- > Net Zero Energy Concert
- > ECO Art Exhibit
- > Sustainable food vendors



Random Act of Kindness Presents
HUG THE LAKE
at 12:00 PM

Join us for 15 minutes at Lake Osceola
to celebrate Earth Day by participating
in our green booths & hugging the lake



U Conserve Campaign



**Green Office
Certification Program**



**Green Event
Certification Program**



**GREEN LAB
Certification Program**




**Green
PATROL**



**Green
Committee**

Application for UM Green Office Certification

 Green Office Certification Program	Date Submitted:
Office/Department:	Number of staff/members:
Campus (please circle one): <input type="radio"/> CG <input type="radio"/> RSMAS <input type="radio"/> MEDICAL	
Blgd:	Room#:
Green Office Leader Name:	
Email:	Phone:
<small>I/We, representative(s) of the above office or department applying for the UM Green Office Certification, sign below that to the best of my/our knowledge, this office has successfully completed all applicable steps required by the Green U - Office of Sustainability.</small>	
Director's Signature	Green Office Leader Signature

 **Green Office
Certification Program**

CHECKLIST

Check off the items your office practices/is committed to practicing

ENERGY:

- Set computer sleep modes to 10 minutes or less (*Control Panel-Power Options*)
- Turn off lights when the office/room(s) is not in use and at the end of the work day
- Post stickers provided by Green U on every switch that is not motion sensor
(If you need more send an email to leddy@umt.edu)



Let's check this checklist!

HERE

Want to get involved ?

- Subscribe to our newsletter
- Contact green@umiami.edu
- **Be part of our:**

Staff



Faculty



Undergrad Students



Grad Students



Visit miami.edu/sustainability